

DURASTRIP RGB PIXEL CONTROL IP65

DURASTRIP Pixel Control allows each segment (10 cm) of LEDs to be controlled independently. This means it is possible to manage an infinite number of combinations of dynamic colour on an infinite number of colours from the RGB + white 4 in 1 chip, with colours ranging from pastel shades to pure RGB. Pixel Control is the most attractive, amazing, and easily applied dynamic light solution. It connects directly to the DMX512 signal on the control system, considering that the segments are configured on the addresses from 1 to 50.

Installation

Complete with 3M double-sided tape to attach to the surface. When using double-sided tape degrease the application surface adequately. **Always use with aluminium profiles for heat dissipation.**

Usage information

Dimmable 0-100%
DMX 512 SIGNAL

Packaging

Packaged in 5 meters reels.
Or custom products cut to specific lengths see page 11, 322.

LED

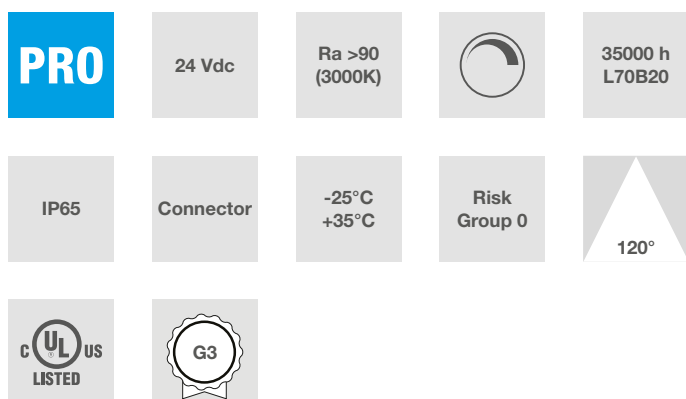
LED 5050RGBW DMX
60 LED/m
100W (20W/m)
24VDC
Lifetime: >35,000h
Warranty: 3 years

Colour of the light

RGB + 3000K (Ra>90)

Connections

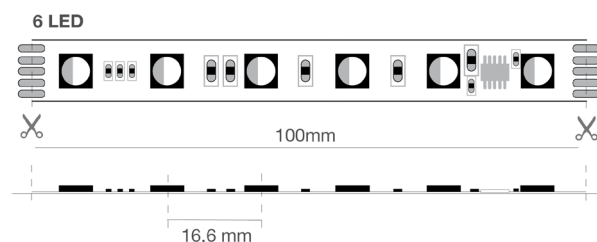
Complete with IP68 / 68 Male/Female wire on 2 sides, length 15 cm. Strips can be cut to size by following the cutting indications printed on the strips. The electrical connection must be from PI to PO strictly following the direction of the arrow printed on PCB: if the connection is reversed, it will be impossible to control the strip and it might even be damaged.



Characteristic data

Power	100 W	Beam	120°	Dimmable	Yes	Input	24 Vdc
Base	Connector	IP	65	Tc	3000K + RGB	Ra	>90 (3000K)
LED Warranty	G3	RG	RG0				

Dimensional characteristics



L	5000 mm
L1	14 mm
H	4 mm

Cutting pitch	100 mm
LED pitch	16.6 mm

Lighting and photometric features

Beam opening	120°
Nominal flux per mt	280 lm/m
CCT nominal colour temperature	3000K + RGB
Colour of the light	RGB+White
Colour rendering index	>90 (3000K)
Lifespan	35000 h
LED lifespan	L70B20
Trigger time	<0,2 s
Heating time up to 60% of full efficiency	Instant Full Light
Mercury	0 mg

Electrical characteristics

Rated power	100 W
Input voltage	24 Vdc
Dimmable	Yes
Number of cycles	70000
Operating temperature	-25°C / +35°C
Operating position	360°

Photometry

	3000K	H(m)	D(m)	E _{max} (lx)
	Ra90		117°	
Fixture Power	20W	1	3.25	88
Source Flux	280lm	2	6.50	22
Fixture Flux	280lm	3	9.74	10
Efficacy	14lm/W	4	12.99	6
950231 I _{max} =316cd/klm	I _{max}	88cd	5	16.24

EulumDat file on the site

LED Warranty

G3	Up to 3 years (4000h/year) *4000h = 11h a day x 365 days. Without limitations on the duration of use for the first year, provided the observance of the installation conditions.
----	--

European Directives

2009/125/EC * Ecodesign
 2011/65/EU * RoHS
 2012/19/EU * RAEE
 2014/30/EU * EMC
 2015/863 * Amending RoHS
 2017/1369 * Regulation for Energy Labelling
 2019/2015 * Regulation for Energy Labelling
 2019/2020 * Regulation for Ecodesign
 2021/340 * Amending Reg. Energy Labelling
 2021/341 * Amending Reg. Ecodesign

Product standards

CEI EN 55015:2020 (+A11:2020)
 CEI EN 60598-1:2022
 CEI EN 60598-2-1:2022
 CEI EN 61000-3-2:2019 (+A1:2021)
 CEI EN 61000-3-3:2014 (+EC1:2014/+EC2:2016/+A1:2021/+A2:2022)
 CEI EN 61547:2010
 CEI EN 62031:2021 (+A11:2022)
 CEI EN 62471:2010
 IEC/TR 62471-2:2009
 CEI EN 62493:2015
 CEI 34-141:2014

Logistics data

Barcode single item	8011905950231
---------------------	---------------