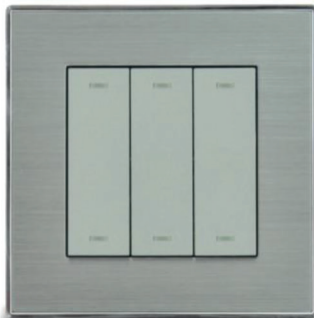


DALI WALL TOUCH DIMMER SYSTEM (Cod. DALI-EXT-SW2, Cod. DALI-EXT-SW3)



Cod. DALI-EXT-SW2



Cod. DALI-EXT-SW3

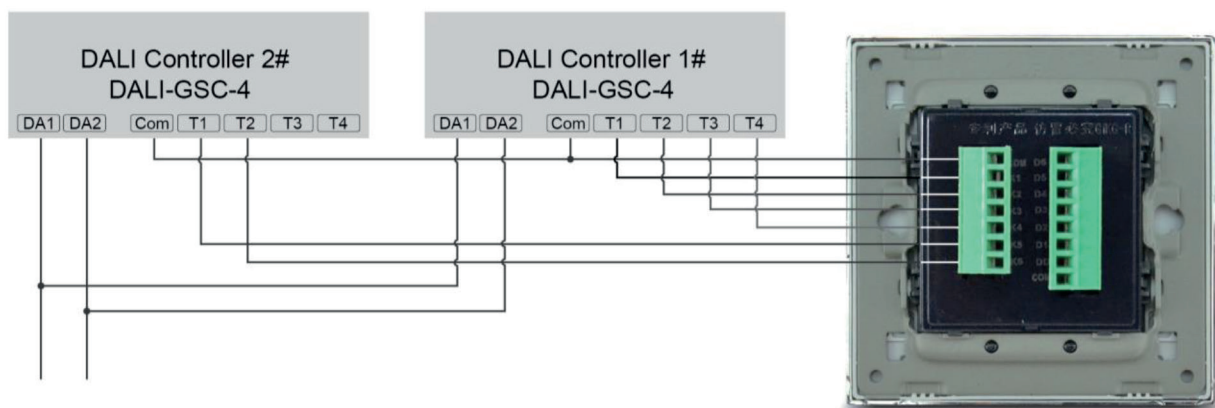
Product Description

| Model | DALI-EXT-SWX (X is from 2 to 3, show the number of switch pole) |
|-------------|---|
| Type | Dual control switch |
| Voltage | 12VDC |
| Current | < 50mA |
| Dimension | 86 Socket |
| N.W. | 145g |
| Material | Brushed stainless steel, wrapping |
| Color | Grey |
| Feature | Easy to use |
| Application | Used to trigger weak signal |



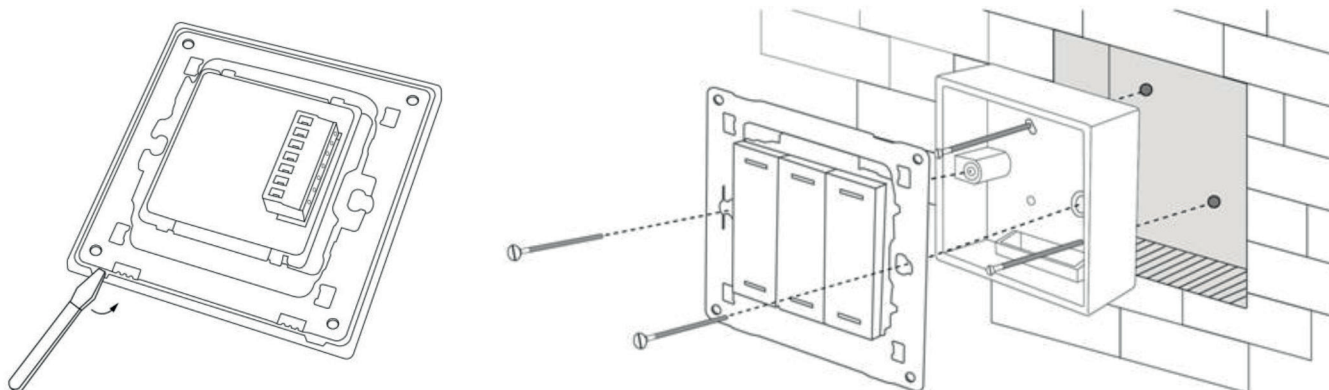
Wiring Diagram

In case of DALI-EXT-SW3, if only part of them are needed, please keep others blank. If you need to complete the same function with two keys on the same panel, you need to connect them together.

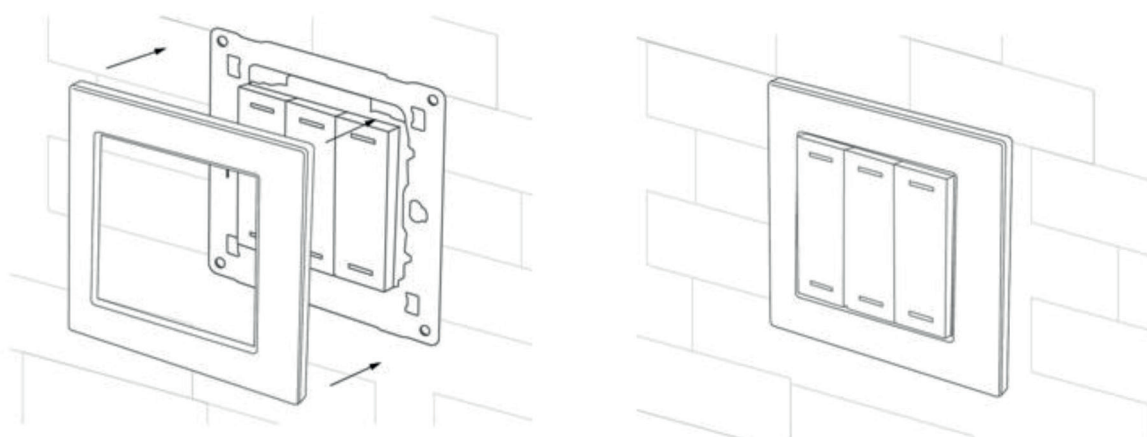


Installation Guide

1. Install the electrical box on the wall.
2. Connect wire according to wire diagram
3. Gently pry gaps in panel with a screwdriver, and then you can slowly remove the panel.



4. Use screws to fit the bottom cover reliably into the electrical box on the wall.
5. Check the direction of the panel and install it on the bottom cover.



Attachment: Installation Dimension (Unit: mm)

