

## DURAstrip TUNABLE CCT IP65

### Typology

24V Strip LED.

### Features

DuraStrip CCT offers two white colour temperature variation options: from 1800K to 3500K or from 2700K to 6500K.

DURAstrip CCT, allows to manage the light in a dynamic way, to change in a positive way the environment and the sensations of the people who frequent it, to favour the well-being and the improvement of the performances.

### Installation

Complete with 3M double-sided tape to attach to the surface.

When using double-sided tape degrease the application surface adequately.

### Applications

Dynamic light is essential in environments where people remain for a long period of time, such as offices, schools, etc., its use is equally useful to create different atmospheres in the same environment: it allows you to illuminate a restaurant with a vibrant white light at lunch and a softly relaxing light at dinner!

### Usage information

Dimmable 0-100%

DALI - DMX

Analogue and digital domotic control systems

CASAMBI compatible

### Packaging

Packaged in 4 meters reels.

This product can be customized: consult the catalogue or the sales force for details.

### Colour of the light

Choice of white colour temperatures:

1800K - 3500K

2700K - 6500K

### Binning

ANSI/SDCM: 3 step.

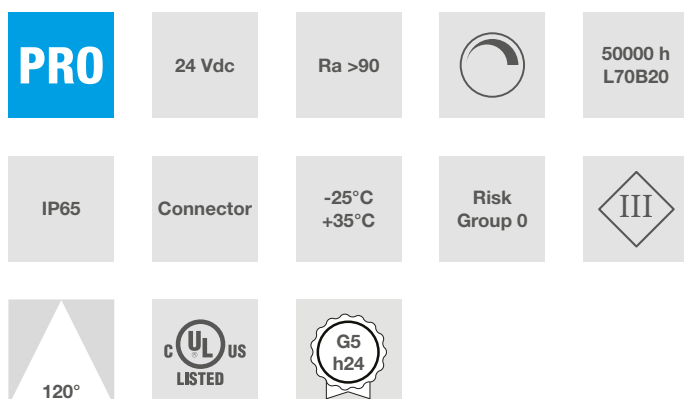
### Connections

IP20: terminals with free wires.

IP65: complete with a 15 cm long IP65/68 M/F cable on 2 sides.

Maximum connection length 5 m. Max 4A.

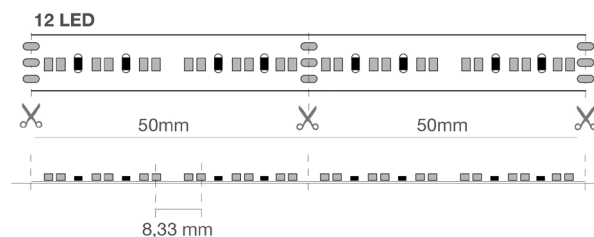
Strips can be cut to size by following the cutting indications printed on the strips.



### Characteristic data

Power	70 W	Beam	120°	Dimmable	Yes	Input	24 Vdc
Base	Connector	IP	65	Tc	2700-6500 K	Ra	>90
LED Warranty	G5h24	RG	RG0				

## Dimensional characteristics



L	5000 mm
L1	12 mm
H	5 mm

Cutting pitch	50 mm
LED pitch	8.33 mm

## Lighting and photometric features

Beam opening	120°
Nominal flux per mt	1000 lm/m
CCT nominal colour temperature	2700-6500 K
Colour of the light	CTA
Colour rendering index	>90
Lifespan	50000 h
LED lifespan	L70B20
Trigger time	<0,2 s
Heating time up to 60% of full efficiency	Instant Full Light
Mercury	0 mg

## Electrical characteristics

Rated power	70 W
Input voltage	24 Vdc
Dimmable	Yes
Energy efficiency class	This product contains a light source of energy efficiency class "G"
Operating temperature	-25°C / +35°C
Operating position	360°

## Photometry

	6500K	H(m)	D(m)	E <sub>max</sub> (lx)
	Ra90		117°	
Fixture Power	14W	1	3.25	341
Source Flux	1080lm	2	6.50	85
Fixture Flux	1080lm	3	9.74	38
Efficacy	77lm/W	4	12.99	21
950064 I <sub>max</sub> =316cd/klm	I <sub>max</sub>	341cd	5	16.24

EulumDat file on the site

## LED Warranty

G5h24	Full Guarantee 5 years (24h/24h) Without limitations on the duration of use for the first year, provided the observance of the installation conditions.
-------	---

## European Directives

2009/125/EC \* Ecodesign  
 2011/65/EU \* RoHS  
 2012/19/EU \* RAEE  
 2014/30/EU \* EMC  
 2015/863 \* Amending RoHS  
 2017/1369 \* Regulation for Energy Labelling  
 2019/2015 \* Regulation for Energy Labelling  
 2019/2020 \* Regulation for Ecodesign  
 2021/340 \* Amending Reg. Energy Labelling  
 2021/341 \* Amending Reg. Ecodesign

## Product standards

CEI EN 55015:2020 (+A11:2020)  
 CEI EN 60598-1:2022  
 CEI EN 60598-2-1:2022  
 CEI EN 61000-3-2:2019 (+A1:2021)  
 CEI EN 61000-3-3:2014 (+EC1:2014/+EC2:2016/+A1:2021/+A2:2022)  
 CEI EN 61547:2010  
 CEI EN 62031:2021 (+A11:2022)  
 CEI EN 62471:2010  
 IEC/TR 62471-2:2009  
 CEI EN 62493:2015  
 CEI 34-141:2014

## Logistics data

Item net weight	268 gr
Barcode single item	8011905950064
Number of pieces multiple pack	20
Barcode multiple pack	8011905952501
Minimum order quantity	20
Minimum packaging	20 / 20