

TUBOLED FOOD

Typology

T8 LED tubes for special applications.

Features

Produced with calibrated spectra to improve visual perception of goods in different product sectors.

Material

White glass body, plastic caps.

Applications

The retail food, baked goods and hospitality industries.

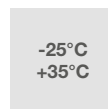
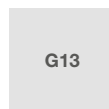
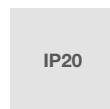
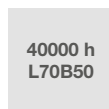
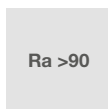
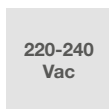
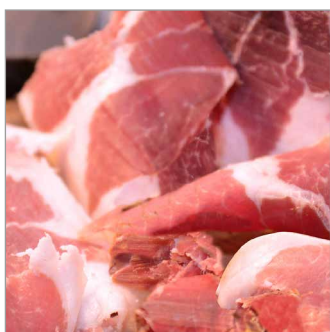
Usage information

Do not use with dimmer.

In case fluorescent tubes must be replaced, follow the simple assembly instructions indicated.

See instructions on the website.

Do not use in in-series installations.



Characteristic data

Power	20 W	Beam	280°	Dimmable	No	Input	220-240 Vac
Base	G13	IP	20	Flux	1450 lm	PF	0,92
Tc	2500 K	Ra	>90	LED Warranty	G4h24		

Dimensional characteristics



L	1212 mm
Ø	29 mm

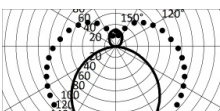
Lighting and photometric features

Beam opening	280°
Flux	1450 lm
CCT nominal colour temperature	2500 K
Colour rendering index	>90
Lifespan	40000 h
LED lifespan	L70B50
Trigger time	<0,2 s
Heating time up to 60% of full efficiency	Instant Full Light
Mercury	0 mg

Electrical characteristics

Rated power	20 W
Input voltage	220-240 Vac
Frequency	50 Hz
Dimmable	No
Power factor (PF)	0,92
Input current	0.92 A
Weighted energy consumption	20 kWh/1000h
Number of cycles	100000
Operating temperature	-25°C / +35°C
Operating position	360°

Photometry

 <p>A photometric diagram showing a circular beam of light. The beam is defined by a solid black circle with a diameter of 172cd/klm. The beam is surrounded by a larger, dotted circle. The diagram includes a grid of concentric circles and radial lines, with angles marked from 0° to 360° in 30° increments. The beam is labeled with 'Imax=172cd/klm'.</p>	-		
	Ra90		
	Fixture Power	20W	
	Source Flux	1450lm	
	Fixture Flux	1450lm	
	Efficacy	72lm/W	
	938994	Imax=172cd/klm	Imax

EuLumDat file on the site

LED Warranty

G4h24	Full Guarantee 4 years (24h/24h) Without limitations on the duration of use for the first year, provided the observance of the installation conditions.
-------	---

European Directives

2009/125/EC * Ecodesign
2011/65/EU * RoHS
2012/19/EU * RAEE
2014/30/EU * EMC
2014/35/EU * LVD
2015/863 * Amending RoHS
2017/1369 * Regulation for Energy Labelling
2019/2015 * Regulation for Energy Labelling
2019/2020 * Regulation for Ecodesign
2021/340 * Amending Reg. Energy Labelling
2021/341 * Amending Reg. Ecodesign

Product standards

CEI EN 55015:2020 (+A11:2020)
CEI EN 60968:2016
CEI EN 61000-3-2:2019 (+A1:2021)
CEI EN 61000-3-3:2014 (+EC1:2014/+EC2:2016/+A1:2021/+A2:2022)
CEI EN 61547:2010
CEI EN 62031:2021 (+A11:2022)
CEI EN 62471:2010
IEC/TR 62471-2:2009
CEI EN 62560:2013 (+A1:2017/+A11:2020)
CEI EN 62776:2015
CEI 34-141:2014

Logistics data

Item net weight	170 gr
Barcode single item	8011905938994
Number of pieces multiple pack	25
Barcode multiple pack	8011905939144
Minimum order quantity	25
Minimum packaging	25 / 25