

PRINTC-G



IP67*

24kN

IK10



art

L1

H

L

PRINTC-G

profilo completo di schermo in PMMA + guida
profile complete with PMMA screen + guide
Profil mit Abdeckung aus PMMA + Führungsschiene
perfil con pantalla de PMMA + guía
profilé avec écran en PMMA + guide

24,7

20,7

1000

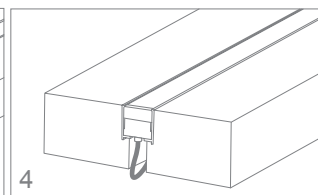
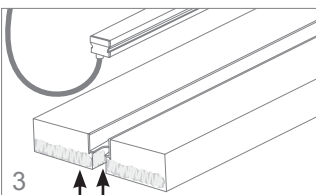
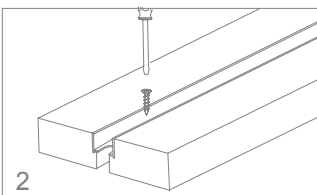
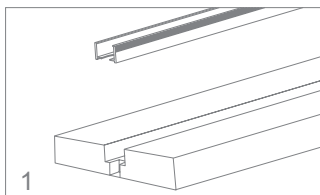
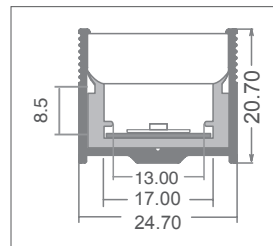
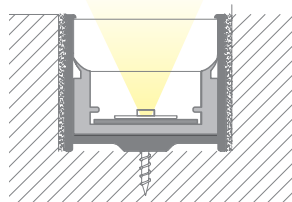
*I profili raggiungono IP67 se debitamente sigillati.

*The profiles reach IP67 if sealed correctly.

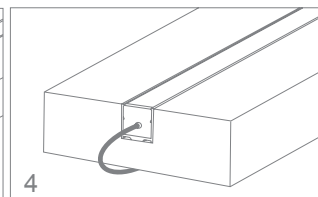
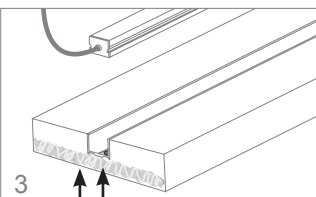
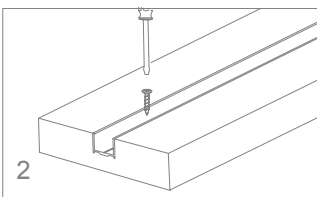
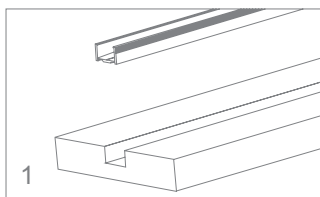
*Bei ordnungsgemäßer Versiegelung erreichen die Profile die Schutzart IP67.

*Los perfiles alcanzan el IP67 si se encuentran debidamente sellados.

*Les profilés atteignent l'indice IP67 s'ils sont dûment scellés.



Drenaggio / Drainage / Drenaje
Materiale drenante / Draining material /
Matériau drainant / Material de drenaje



Drenaggio / Drainage / Drenaje
Materiale drenante / Draining material /
Matériau drainant / Material de drenaje

Prevedere un sistema di drenaggio che permetta uno svuotamento totale del vano che accoglie il profilo in meno di 30 minuti. In caso di impiego di ghiaia, prevedere uno strato di almeno 30 cm.
Provide a drainage system that allows for total drainage of the compartment housing the profile in less than 30 minutes. If gravel is used, provide a layer of at least 30 cm.
Prévoir un système de drainage qui permette le drainage total du compartiment abritant le profilé en moins de 30 minutes. En cas d'utilisation de gravier, prévoir une couche d'au moins 30 cm.
Prever un sistema de drenaje que permita el vaciado total del compartimento que alberga el perfil en menos de 30 minutos. Si se utiliza grava, prever una capa de al menos 30 cm.



art

KTPRINTC-G

2+2 tappi di chiusura in PC
2+2 PC end caps
2+2 Endkappen aus PC
2+2 tapones de cierre de PC
2+2 embouts de fermeture en PC