



DURAstrip RGB + WHITE IP68

RGBW DURAstrip, RGB colours along with a shade of warm white. Introducing a white spectrum the saturated RGB tones are "intensified" and the nuances that can be obtained increase: at the same time white can be enriched with RGB colours to obtain surprising pastel tones. RGBW offer the possibility to obtains a "real" white in the indicated tone, 2700K and not a white obtained by overlapping red-green-blue, i.e. the one produced by RGB strips. White emission from the LED quad is more efficient than coloured LED sources which means RGBW strips are more high performance and suitable for professional uses. They can be interfaced with special 4 channel controllers, Code ZKCDMXW to obtain all required tones in a continuous way.

Installation

Complete with 3M double-sided tape to attach to the surface and jumpers to be screwed to the surface.

When using double-sided tape degrease the application surface adequately.

Usage information

Dimmable 0-100%

DMX

Analogue and digital domotic control systems

CASAMBI compatible

Power supply

Full power RGB+White = 75W; only white = 18W; only red = 22W; only blue = 18W; only green = 16W.

Packaging

Packaged in 5 meters reels.

Notes

Different LED packaging technology with this strip with 4-in-1 CHIP that makes it possible to obtain an unrivalled uniform light output. A perfect colour mix.

Colour of the light

RGB + 3000K

Connections

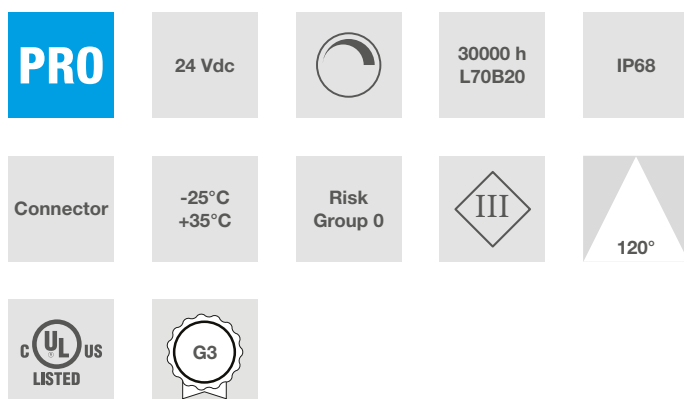
Complete with a 15 cm long IP65/68 M/F cable on 2 sides.

Maximum connection length 5 m. Max 4A in total.

For longer connections, connect in series or parallel.

Strips can be cut to size by following the cutting indications printed on the strips.

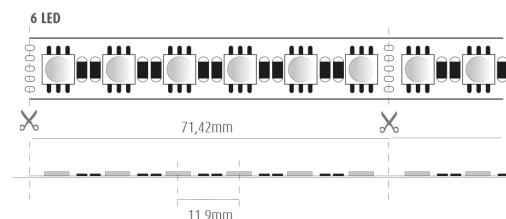
For IP68 strips, restore the IP protection after cutting.



Characteristic data

Power	75 W	Beam	120°	Dimmable	Yes	Input	24 Vdc
Base	Connector	IP	68	Flux	2600 lm	Tc	3000K + RGB
LED Warranty	G3	RG	RG0				

Dimensional characteristics



L	5000 mm
L1	15 mm
H	4 mm

Cutting pitch	71.42 mm
LED pitch	11.9 mm

Lighting and photometric features

Beam opening	120°
Nominal flux per mt	520 lm/m
Flux	2600 lm
CCT nominal colour temperature	3000K + RGB
Colour of the light	RGB+White
Lifespan	30000 h
LED lifespan	L70B20
Trigger time	<0,2 s
Heating time up to 60% of full efficiency	Instant Full Light
Mercury	0 mg

Electrical characteristics

Rated power	75 W
Input voltage	24 Vdc
Dimmable	Yes
Number of cycles	100000
Operating temperature	-25°C / +35°C
Operating position	360°

LED Warranty

G3	Up to 3 years (4000h/year) *4000h = 11h a day x 365 days. Without limitations on the duration of use for the first year, provided the observance of the installation conditions.
----	--

European Directives

2009/125/EC * Ecodesign
2011/65/EU * RoHS
2012/19/EU * RAEE
2014/30/EU * EMC
2015/863 * Amending RoHS
2017/1369 * Regulation for Energy Labelling
2019/2015 * Regulation for Energy Labelling
2019/2020 * Regulation for Ecodesign
2021/340 * Amending Reg. Energy Labelling
2021/341 * Amending Reg. Ecodesign

Product standards

CEI EN 55015:2020 (+A11:2020)
CEI EN 60598-1:2022
CEI EN 60598-2-1:2022
CEI EN 61000-3-2:2019 (+A1:2021)
CEI EN 61000-3-3:2014 (+EC1:2014/+EC2:2016/+A1:2021/+A2:2022)
CEI EN 61547:2010
CEI EN 62031:2021 (+A11:2022)
CEI EN 62471:2010
IEC/TR 62471-2:2009
CEI EN 62493:2015
CEI 34-141:2014

Logistics data

Item net weight	463 gr
Barcode single item	8011905845841
Number of pieces multiple pack	20
Minimum order quantity	20
Minimum packaging	20 / 20